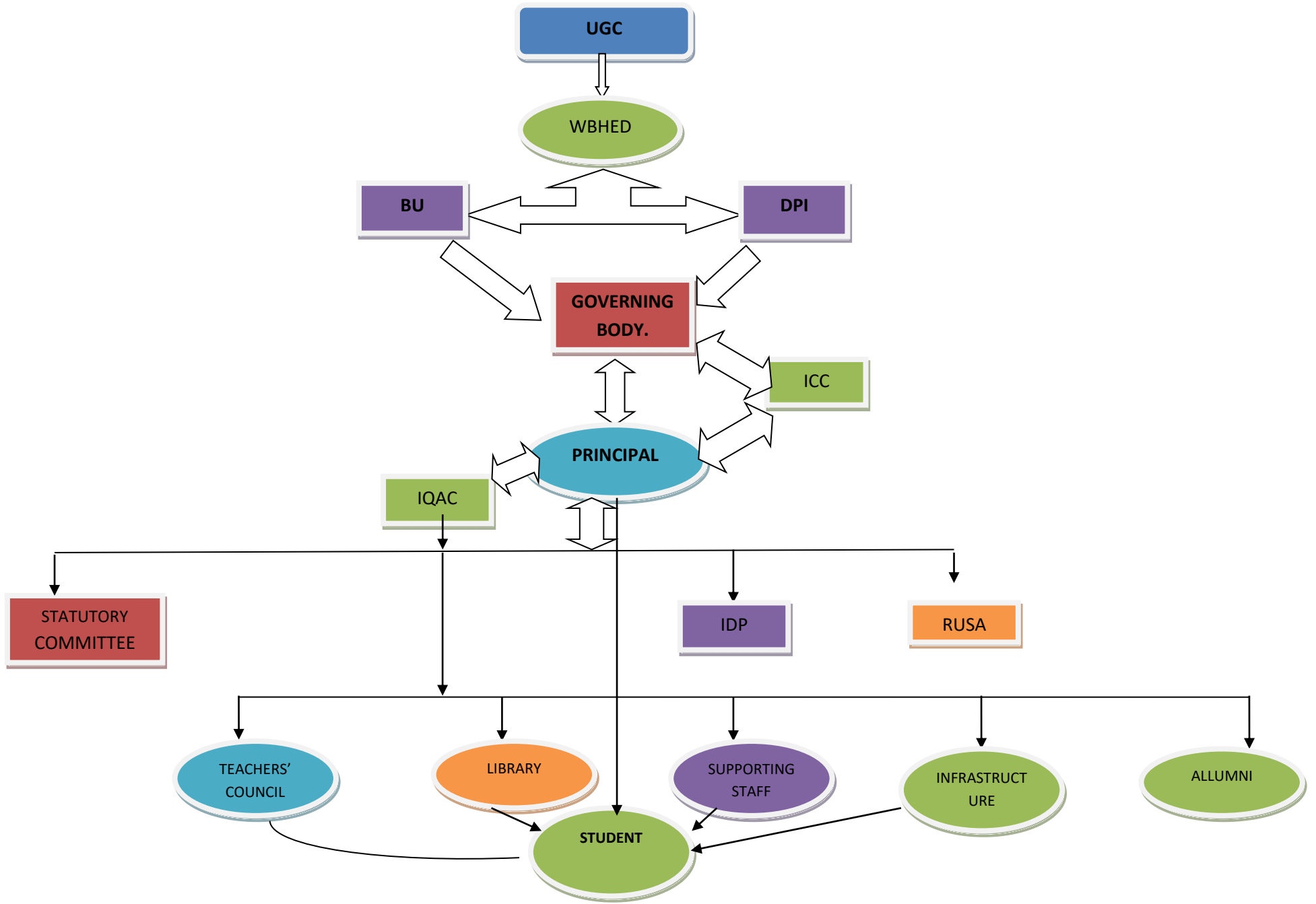


GUSHKARA MAHAVIDYALAYA





GUSHKARA MAHAVIDYALAYA

P.O. Guskara, Dist. Purba Bardhaman, West Bengal - 713128

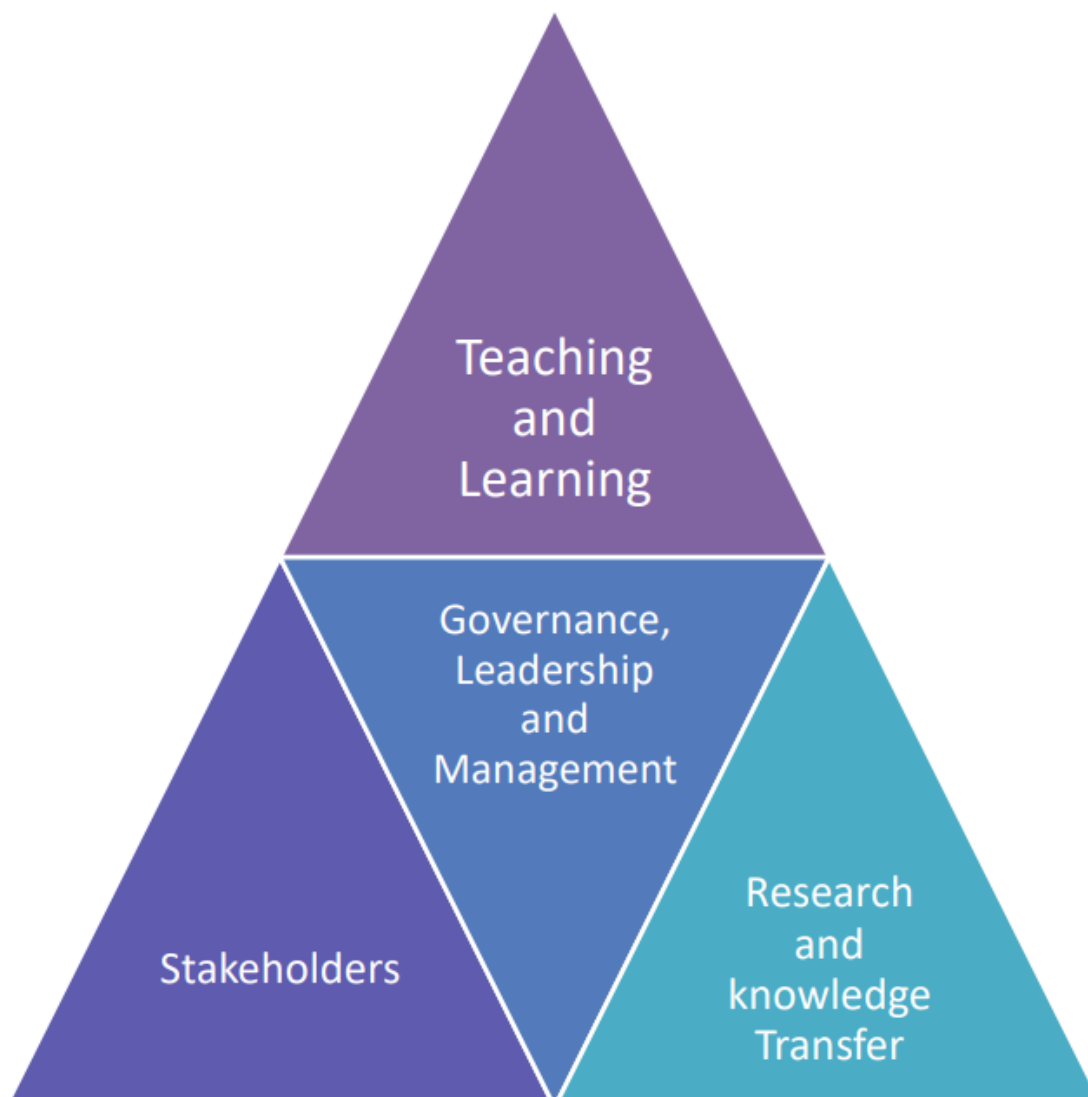
Ph. 03452-255105, Website: gushkaramahavidyalaya.ac.in

E-mail: gushkaramahavidyalaya@gmail.com, office@gushkaramahavidyalaya.ac.in

Ref. No.

Date:

CRITERION-6- GOVERNANCE, LEADERSHIP AND MANAGEMENT





GUSHKARA MAHAVIDYALAYA

P.O. Guskara, Dist. Purba Bardhaman, West Bengal - 713128

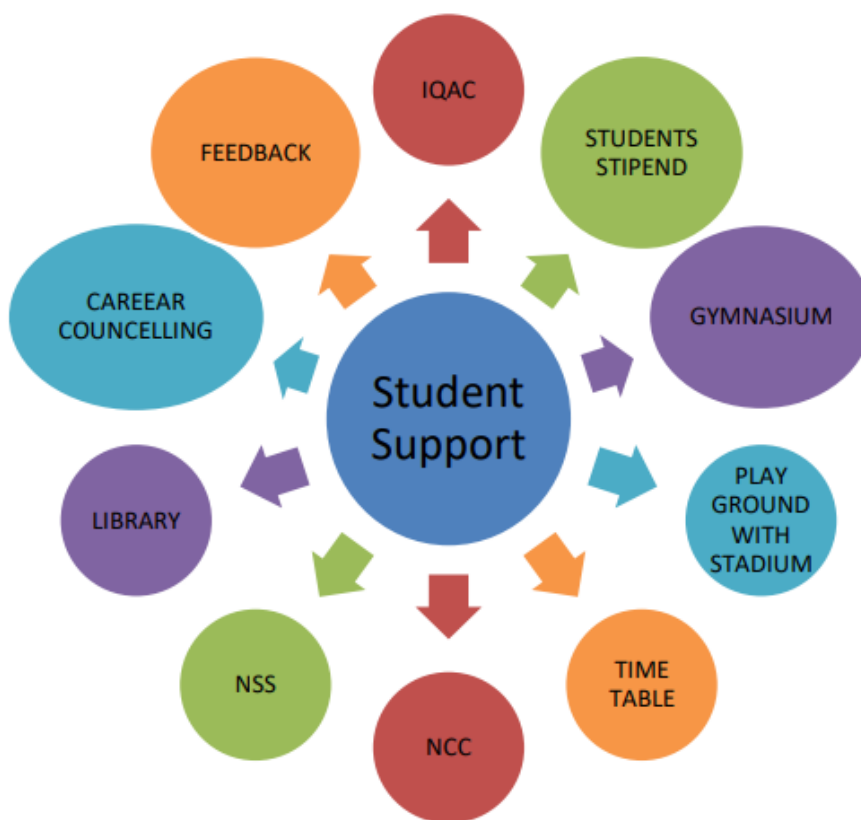
Ph. 03452-255105, Website: gushkaramahavidyalaya.ac.in

E-mail: gushkaramahavidyalaya@gmail.com, office@gushkaramahavidyalaya.ac.in

Ref. No.

Date:

Student Support





GUSHKARA MAHAVIDYALAYA

P.O. Guskara, Dist. Purba Bardhaman, West Bengal - 713128

Ph. 03452-255105, Website: gushkaramahavidyalaya.ac.in

E-mail: gushkaramahavidyalaya@gmail.com, office@gushkaramahavidyalaya.ac.in

Ref. No.

Date:

INTERNAL QUALITY ASSURANCE CELL

